

VIRTUAL GUIDED TOURS

THE FRENCH NATIONAL MONUMENTS AS IF YOU WERE THERE!





THE CENTRE DES MONUMENTS NATIONAUX

WHAT IS?

A public cultural tourism operator with a unique national coverage and network, the Centre des monuments nationaux is a heritage stakeholder with a focus on its visitors. Mont Saint Michel Abbey and Cluny Abbey, the châteaux of Azay-le-Rideau, Angers, If and Pierrefonds, the Ramparts of Carcassonne, La Rochelle's towers, Villa Cavrois, the Conciergerie and the Sainte-Chapelle are all examples of monuments which are opened to visitors across France all year round!

VIRTUAL GUIDED TOURS

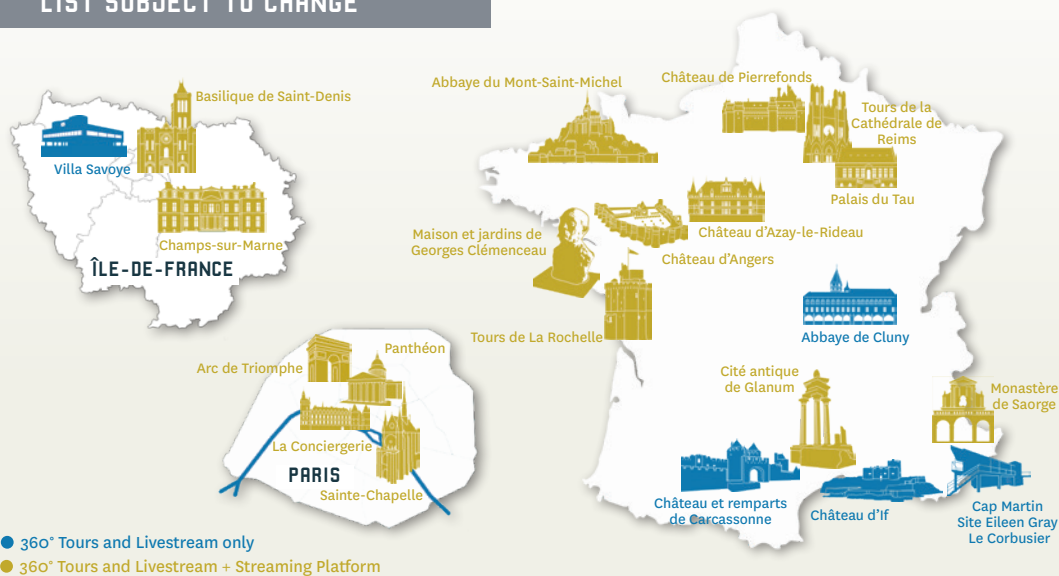
WHY?



One of our principal missions is to provide access to French heritage to as many people as possible. Which is why we have developed a selection of digital visits: virtual guided tours are a key mediation tool to allow visitors to discover our monuments from the comfort of their homes.

THE VIRTUAL GUIDED TOURS AT A GLANCE

LIST SUBJECT TO CHANGE





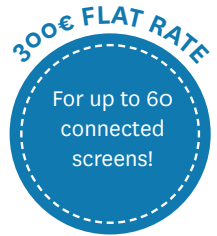
360° TOURS OR LIVESTREAM



360° TOUR



LIVESTREAM



- A live visitor experience from your home
- The expertise of our passionate guides
- A HD video of the monument for 360° tours
- Access to areas not usually open to the public
- Breathtaking panoramas and aerial views
- Interaction with the tour guide who can answer questions live
- New visitor technologies
- The first catalogue of digital tours in France
- Available in all languages



TECHNICAL PREREQUISITES

- The tours are conducted via the Zoom video conferencing system (no installation and no account set-up necessary).
- 5 Mb/s Internet connection at least (to check, use www.speedtest.net)
- A computer with at least 8Gb of RAM, camera, microphone and speakers





STREAMING PLATFORM



Freely view the recordings from your computer



To be used to make your own visits!



PACKAGES

6 months :

→ 1000€

1 year :

→ 1500€

- Unlimited access to video recordings
- Total freedom in the conduct of visits
- A catalogue of HD video recordings updated regularly
- Access to areas not usually open to the public
- New visitor technologies

INFORMATIONS



visitesguideesadistance@monuments-nationaux.fr



<https://tourisme.monuments-nationaux.fr/en/>

